

PRIMINER

Alpha Center V9L-V11L

High performance, high rigidity



V9L · V11L

Upgraded to the 3rd generation

- Rigidity increased by 30% with the new design
- Y axis travel increased from 550mm to 600mm
- Fully enclosed tool changer standard
- More efficient chip removal design
- Improved coolant tank design for efficient filtering and easier maintenance
- Extra high pressure pump for chip flushing system
- Improved cable carrier design for longer life time of the cables



Technical Specifications	V9L	V11L
Worktable size	1060 × 600 mm	1200 × 600 mm
X/Y/Z Travel	900 / 600 / 600 mm	1100 / 600 / 600 mm
Rapid feed X / Y / Z	36 m/min	
Spindle taper	BT40 / SK40 / CAT40	
Spindle speed	10000/12000/15000 rpm	

Optimum structural design

- High rigidity, good performance

Standard arm type ATC 24 pockets

Extra support base for ATC ensure structural stability

Increased span of linear guideways, X axis 50mm, Y axis 35 mm, Z axis 60 mm

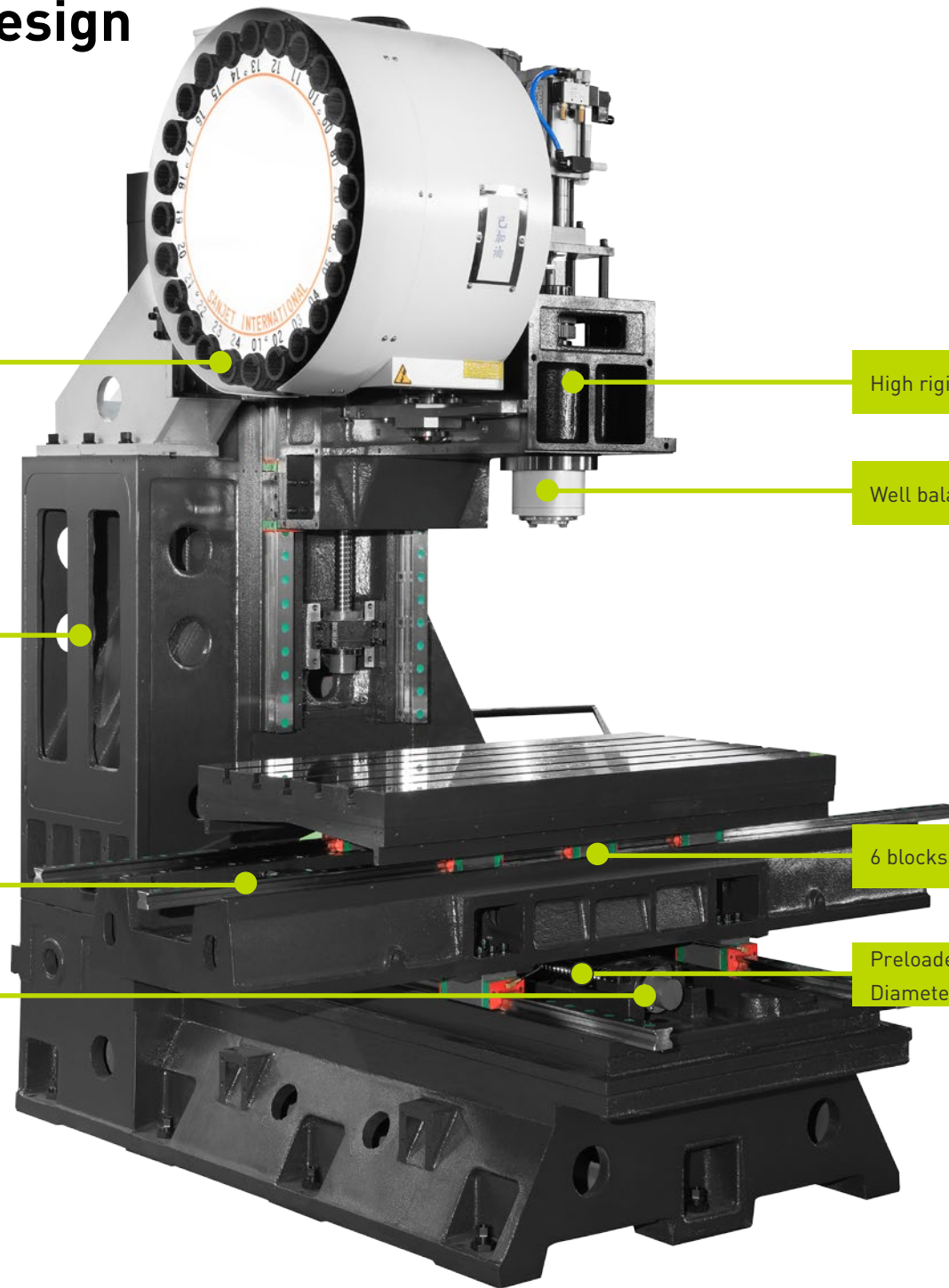
3+2 bearings in each axis

High rigidity of headstock

Well balanced spindle

6 blocks in X axis (V11L)

Preloaded ballscrew with double nut, Diameter $\Phi 40\text{mm}$





Swiss Rotary Table Technology



High speed

- ✓ Up to 210 rpm
- ✓ up to 0.21 sec / 90°

More space

- ✓ Extended travel in Z- and X-direction

Heavy duty

- ✓ High spindle load, heavy-duty bearing

High torque

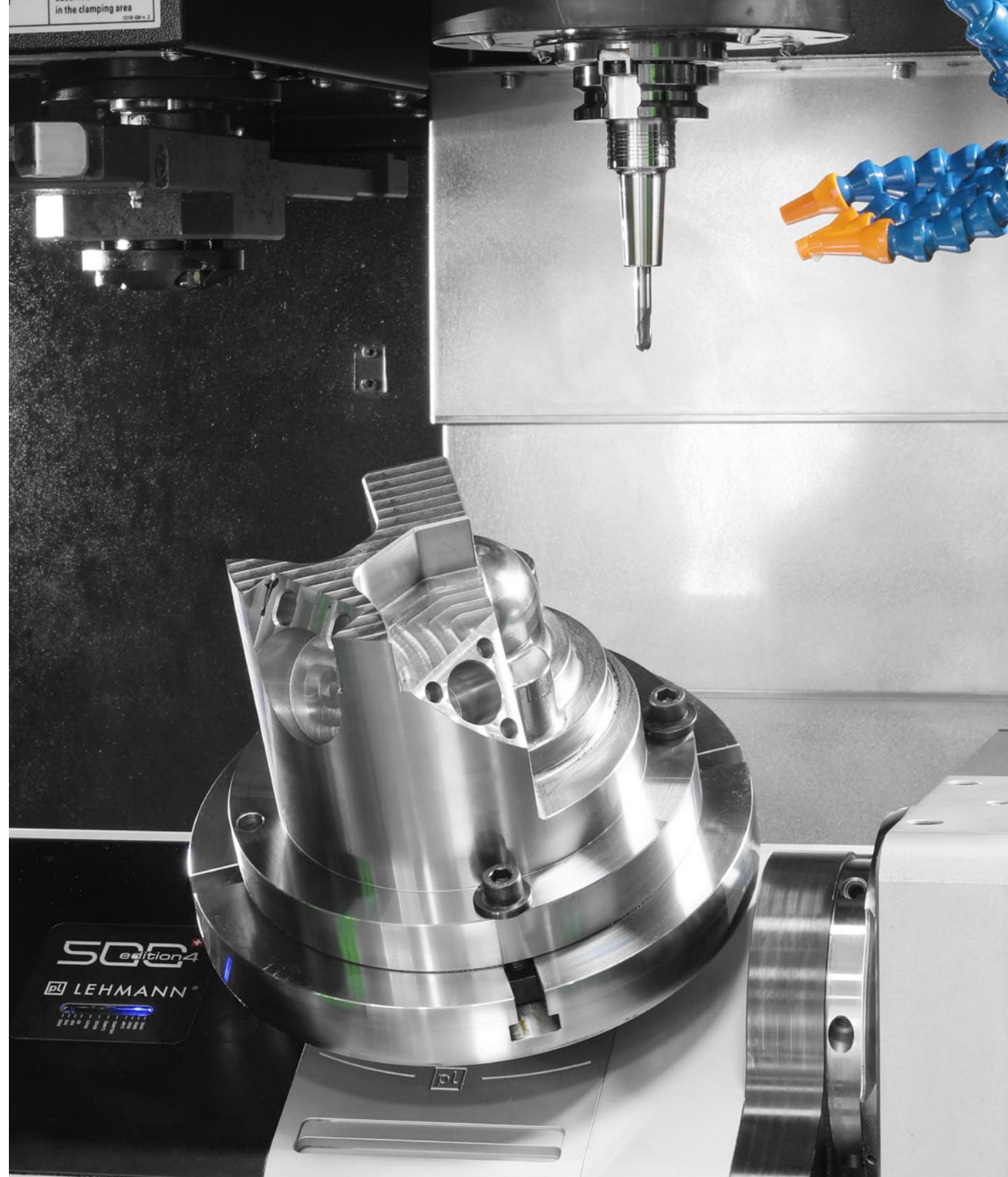
- ✓ Feed torque up to 850 Nm

Adaptability

- ✓ Multifunctional spindle HSK

Precision

- ✓ On the workpiece, as precise as 2µm / 100 mm



BLUM MEASURING SYSTEM

Universal High-Speed touch probe with multidirectional measuring mechanism

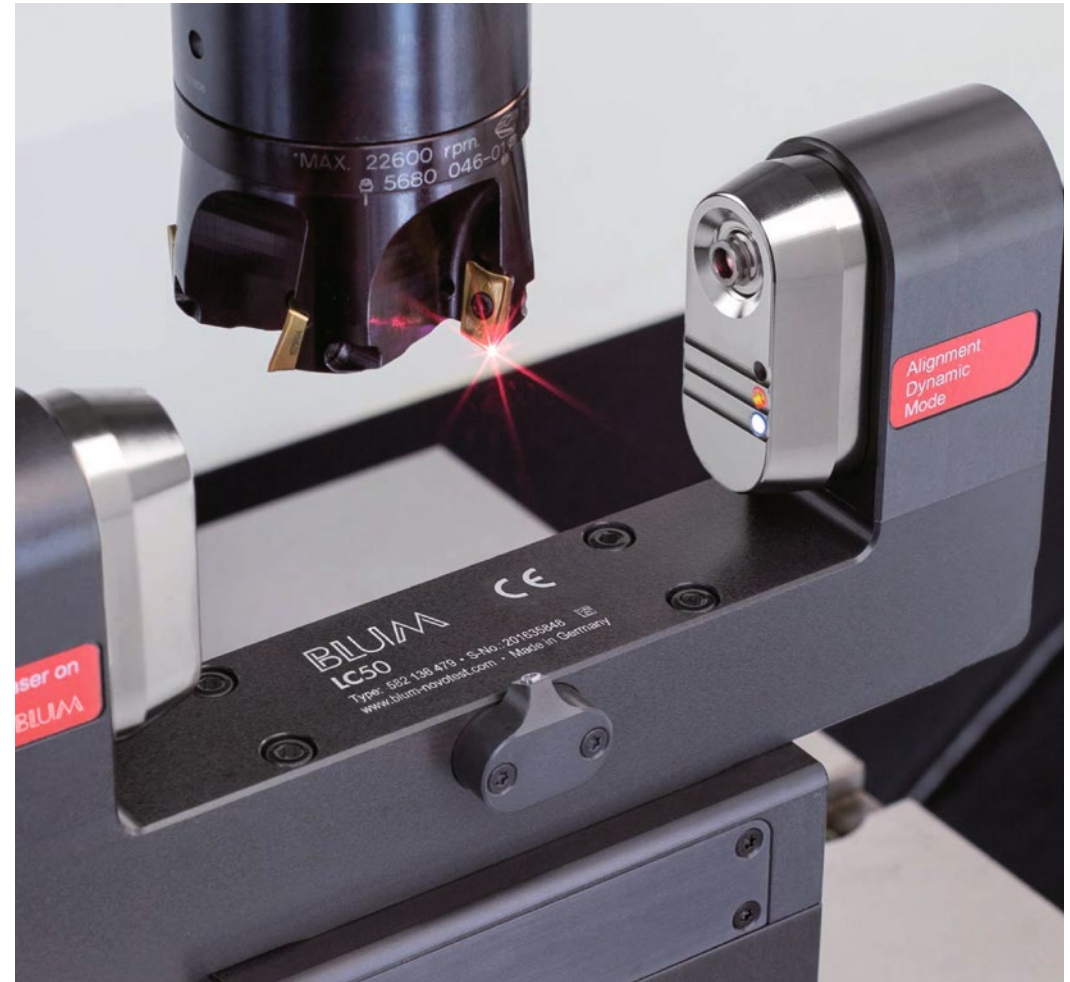
- ✓ Detection of workpiece position
- ✓ Correction of workpiece orientation
- ✓ Thermal compensation of the machine tool
- ✓ Contour measurement

Your benefit:

- ✓ Measuring speed up to 3 m/min
- ✓ Precise, non-lobing touch characteristics
- ✓ No-wear, optoelectronic measuring mechanism
- ✓ Use of two measuring systems with one IR receiver
- ✓ Extended battery life
- ✓ Precise measurement even with coolant
- ✓ Proven and robust design

Highlights

- ✓ Proven high-precision laser measuring system;
- ✓ Non-contact, optical tool measurement;
- ✓ 100 % reliable due to BLUM protection system



FANUC Series 0i-MODEL F Plus

New World-Standard CNC

As a successor to the Series 0i-MODEL F, the FANUC Series 0i-MODEL F Plus has been released with renewed design, enhanced basic functions and the pursuit of ease of use.

It is equipped with the latest control technology for fine surface machining and reducing cycle time, and with customizable functions that can flexibly create screens.

- ✓ Reduced cycle time
- ✓ High-Speed, Fine Surface Machining
- ✓ Renewed design
- ✓ Equipped with +HMI (Type 0)
- ✓ Equipped with FANUC's latest CNC and servo technologies
- ✓ Comes standard with customizability functions
- ✓ Extended memory capacity
- ✓ Consistent Support at Shop Floor
- ✓ Easily use memory cards as high-capacity program memory devices
- ✓ Supported Industrial Ethernet/Field Networks
- ✓ Improvement of the safety of machine tool and machining line



The new CNC-controller for the compact class.

SIEMENS
SINUMERIK 828D

The performance of the SINUMERIK 828D is in a class of its own. Even in the compact frame size, the familiar SINUMERIK state-of-the-art technology ensures the highest possible levels of precision and productivity.

Communications:

- Front interfaces (IP65)
 - RJ45 Ethernet
 - USB 2.0
 - Compact Flash (CF) card

Durable and rugged:

- Panel-based CNC with panel front manufactured out of die-cast magnesium

Everything at a glance:

- 10.4" TFT color display

16 softkeys:

- Using the 8 horizontal and 8 vertical softkeys, you can quickly access all of the operator screen forms with just a few keystrokes

Maintenance-free:

- No battery (continuous data buffering using NV-RAM technology!)
 - No fan
 - No hard disk

User-friendly:

- Full QWERTY keyboard
 - Hard keys with protective foil
 - IP65 degree of protection

Clever:

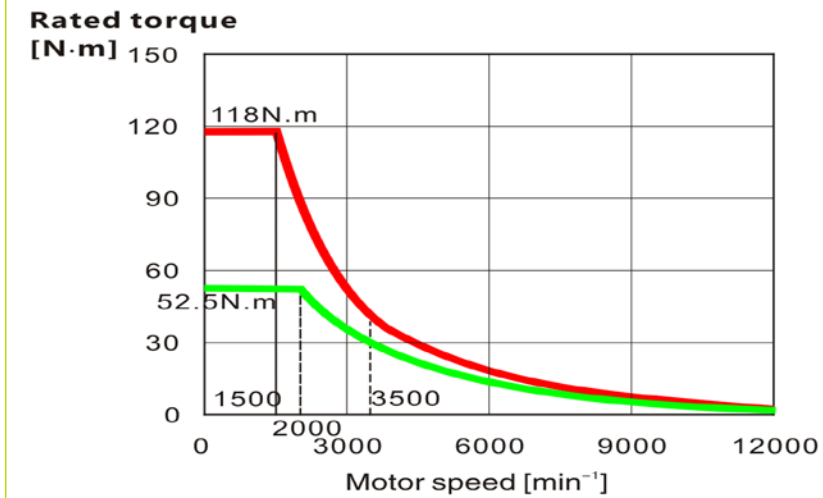
- Proximity sensor/distance sensor for smart display control



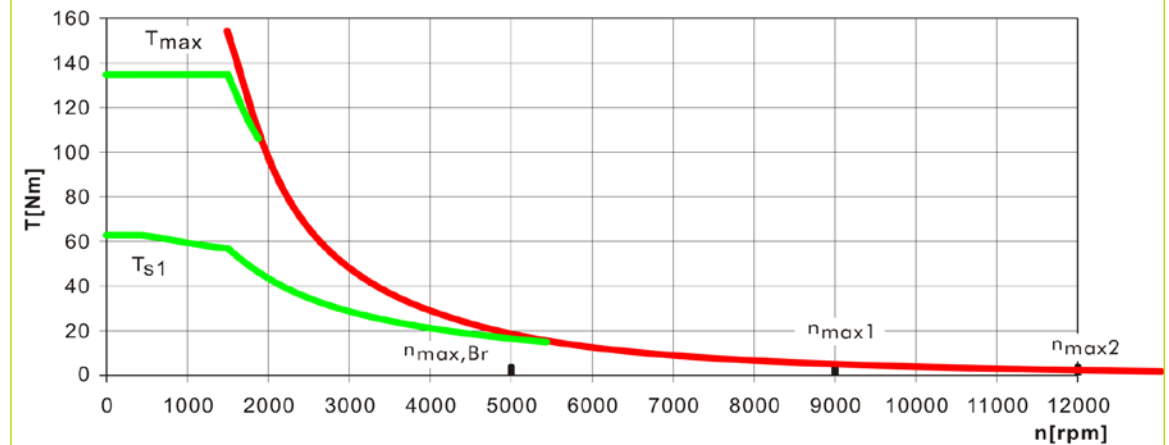
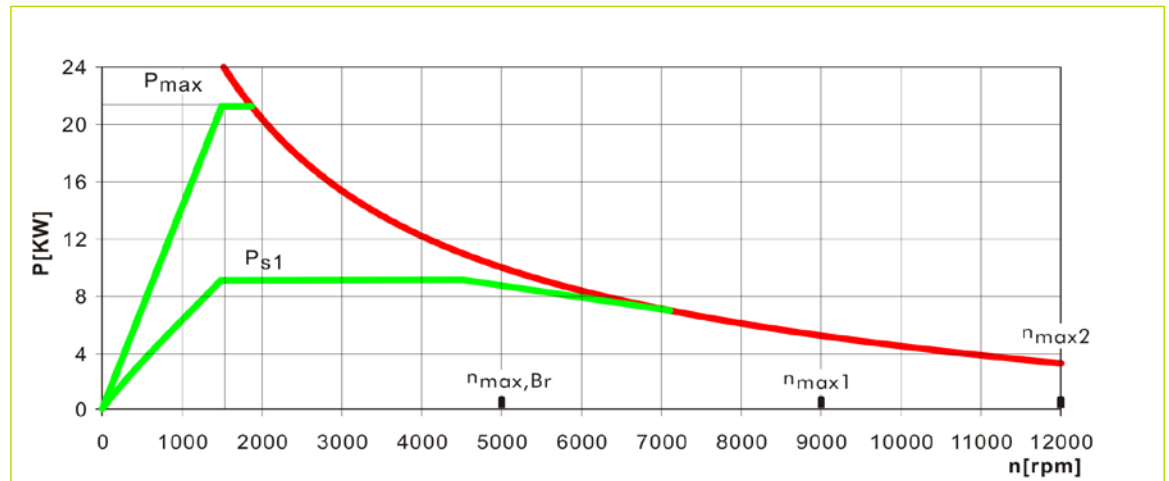
TECHNICAL SPECIFICATION

TECHNICAL SPECIFICATION	V9L	V11L
TABLE		
Table size	1060×600mm	1200×600mm
T slot(width×numer×distance)	18×5×100mm	18×5×100mm
Max.load	800kg	1000kg
TRAVEL		
X/Y/Z Travel	900 / 600 / 600 mm	1100/600/600mm
Spindle nose to table	150-750mm	
Spindle center to column	652mm	
SPINDLE		
Spindle speed	10000 rpm (Opt.12000 rpm)	
Motor power	11 / 18.5 kW (FANUC) ; 9 / 22 kW (SIEMENS)	
Motor torque	52.5 / 118 Nm (FANUC) ; 63 / 135 Nm (SIEMENS)	
FEED		
Rapid feed	36 m/min	
Cutting speed	1-12000 mm/min	
Tool changer		
Number of tools	24	
Max. tool length	300 mm	
Max. tool diameter	Φ78 (Φ125) mm	
Max. tool weight	8 kg	
ACCURACY (VDI 3441 /full travel)		
Positioning accuracy	0.008 mm	
Repeatability accuracy	0.006 mm	
DIEMENSION & WEIGHT		
Dimension	3845×2320×3120 mm	
Weight	6300kg	6500kg

TORQUE DIAGRAM

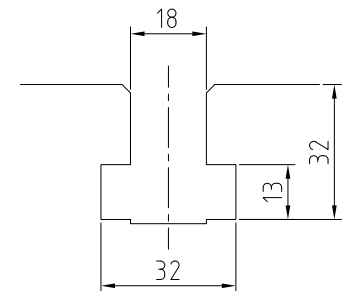
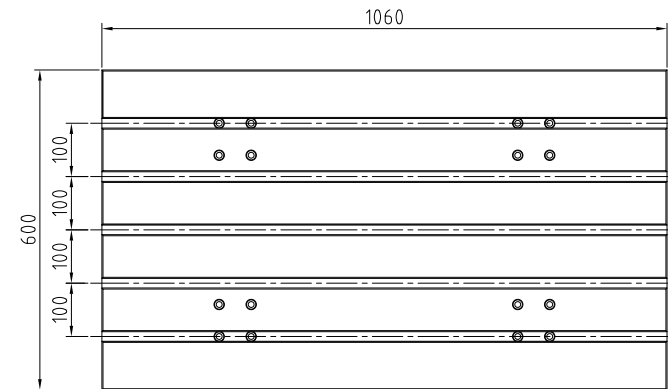
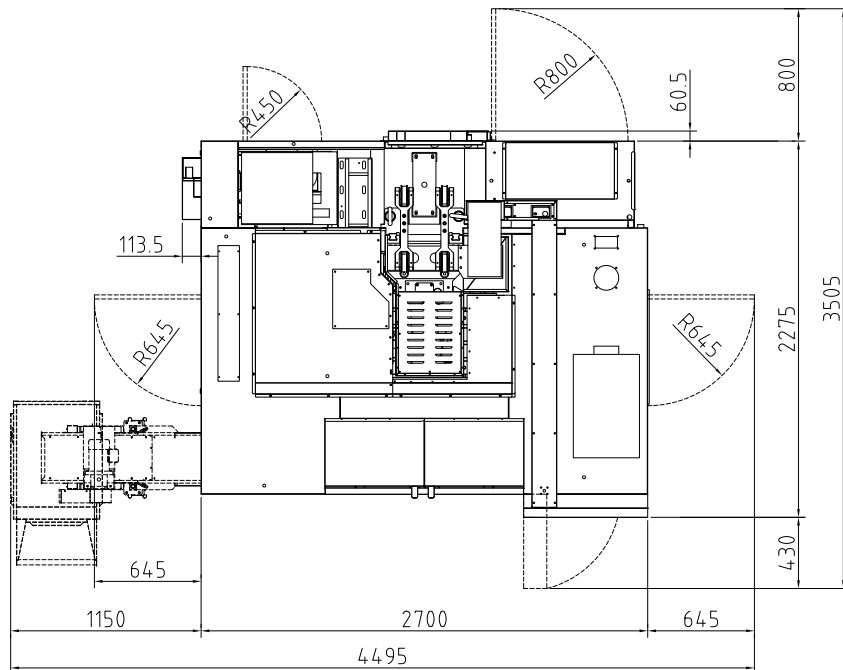
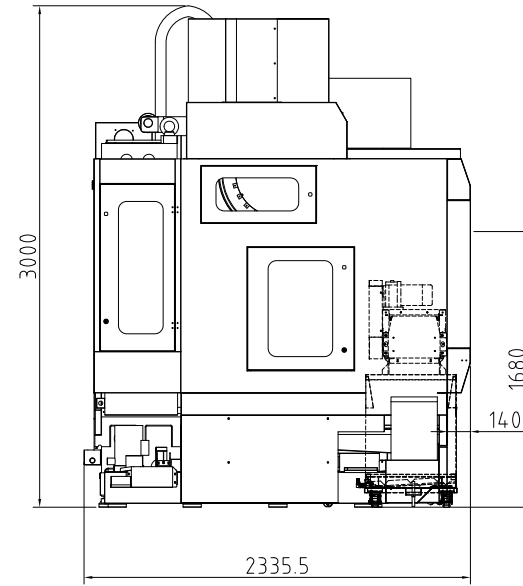
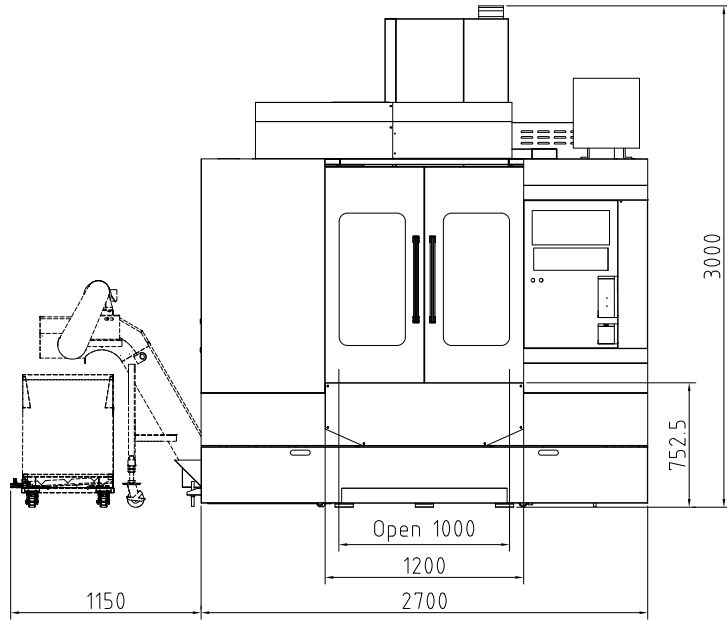


FANUC, 10000/12000 rpm

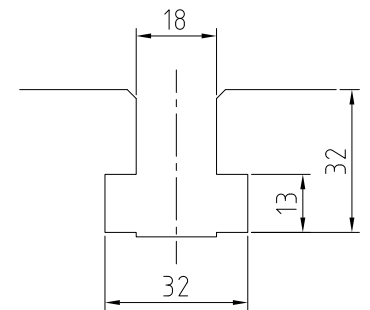
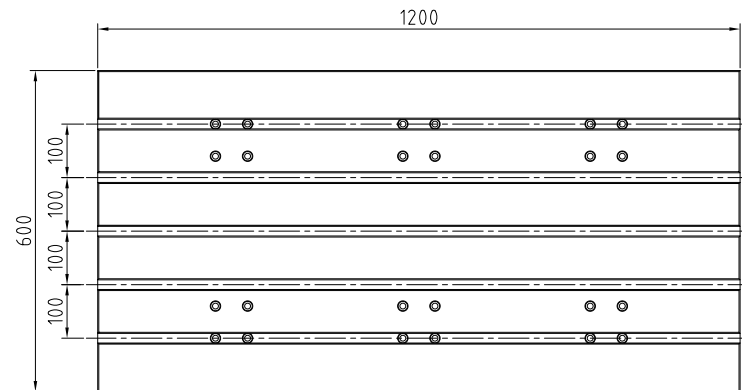
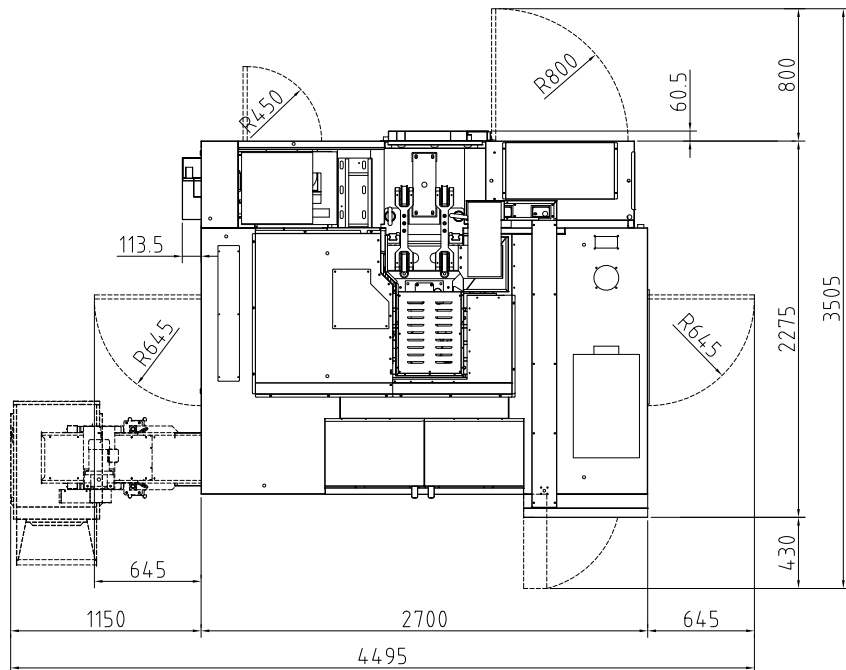
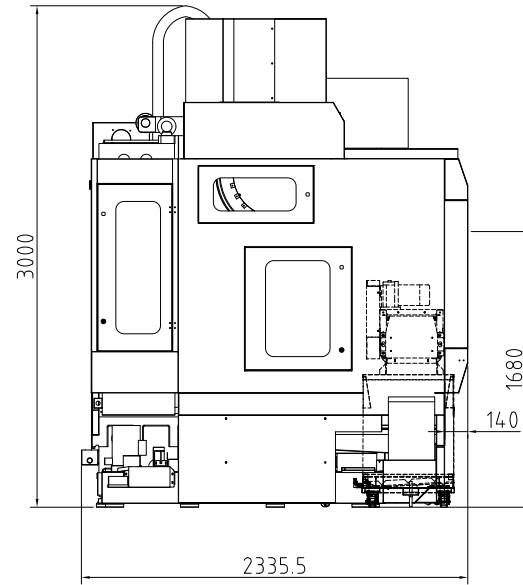
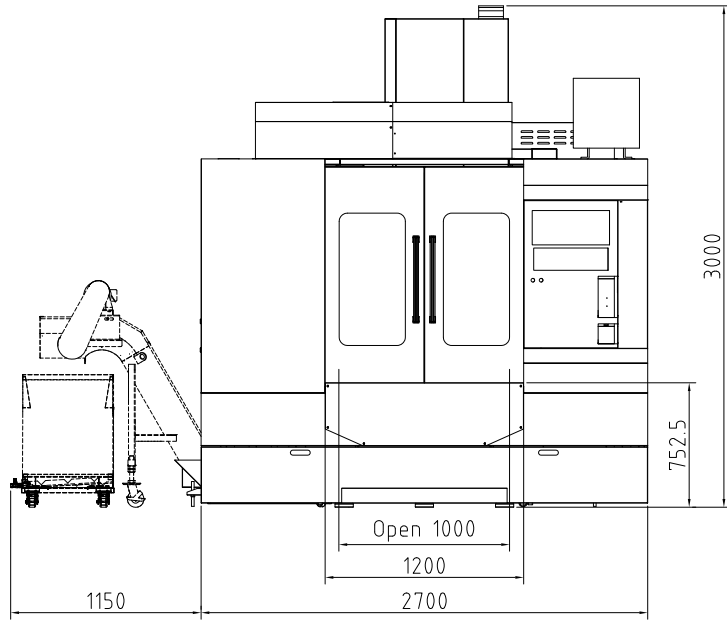


SIEMENS, 10000/12000 rpm

DIMENSIONS OF V9L



DIMENSIONS OF V11L



OUR SUPPLIERS

SIEMENS **FANUC**

pl LEHMANN®

SKF *HIWIN*®

SVC **NSK**



BLUM
focus on productivity

WAGO **FAG**



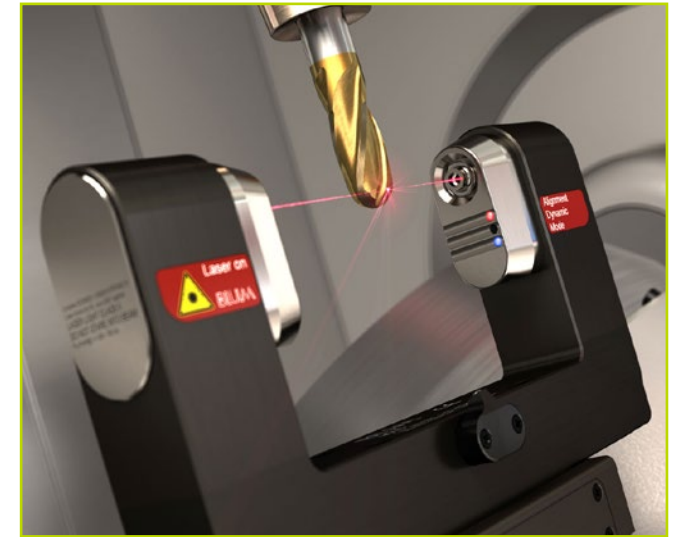
OPTIONS



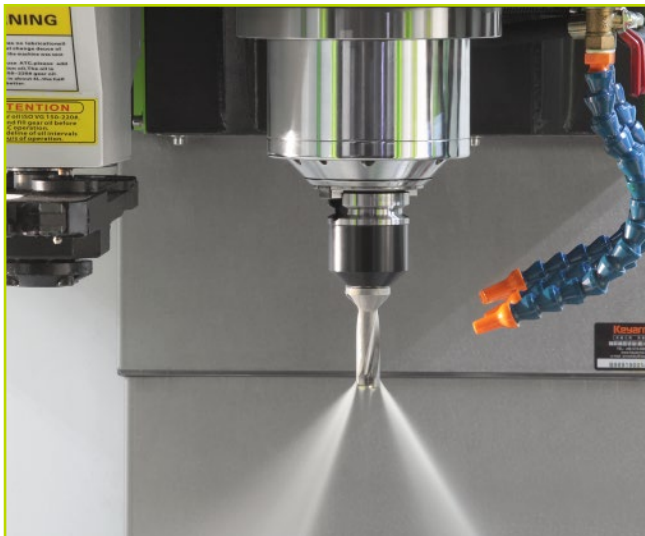
4th axis rotary table



5th axis rotary table



Tool and workpiece probe



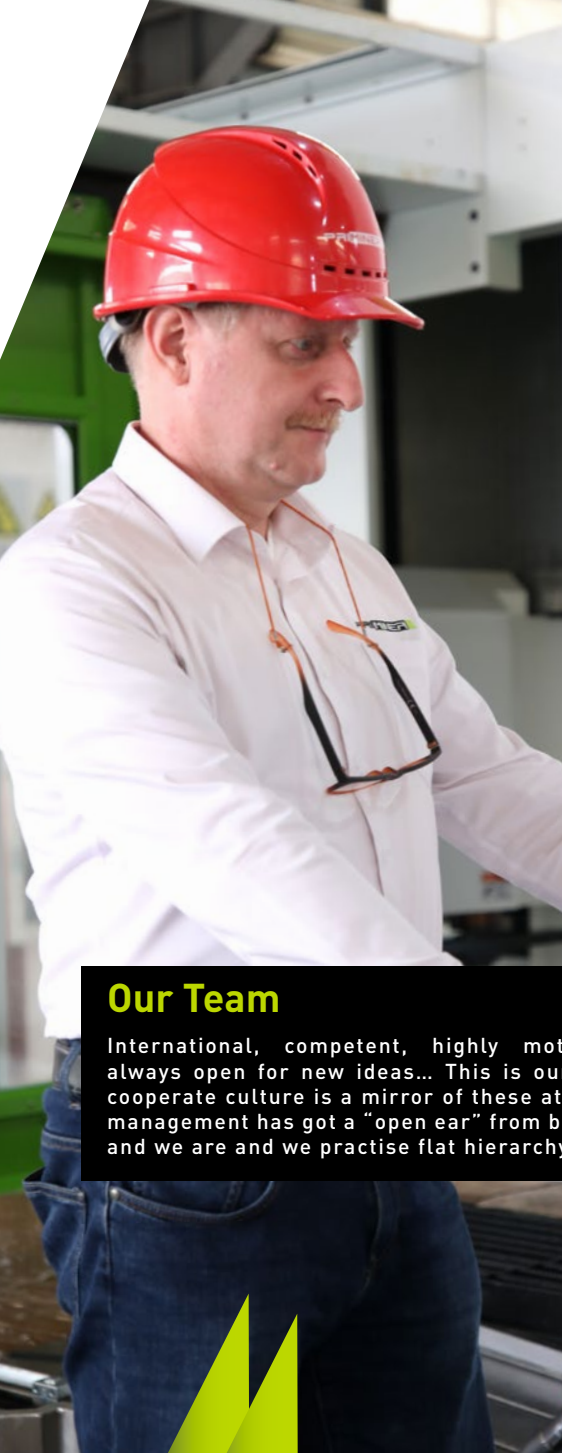
CTS coolant through spindle



Oil mist collector



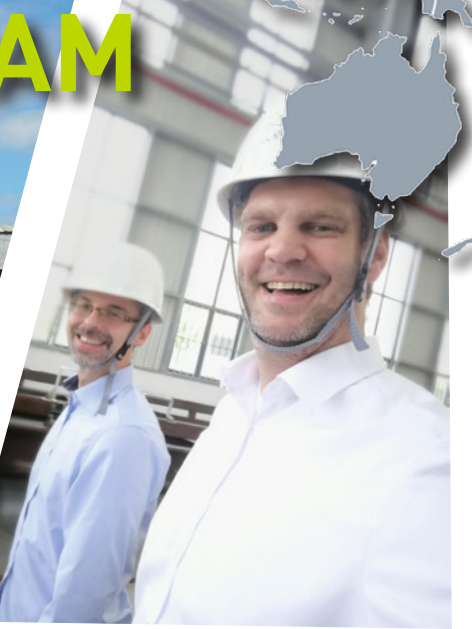
Oil skimmer



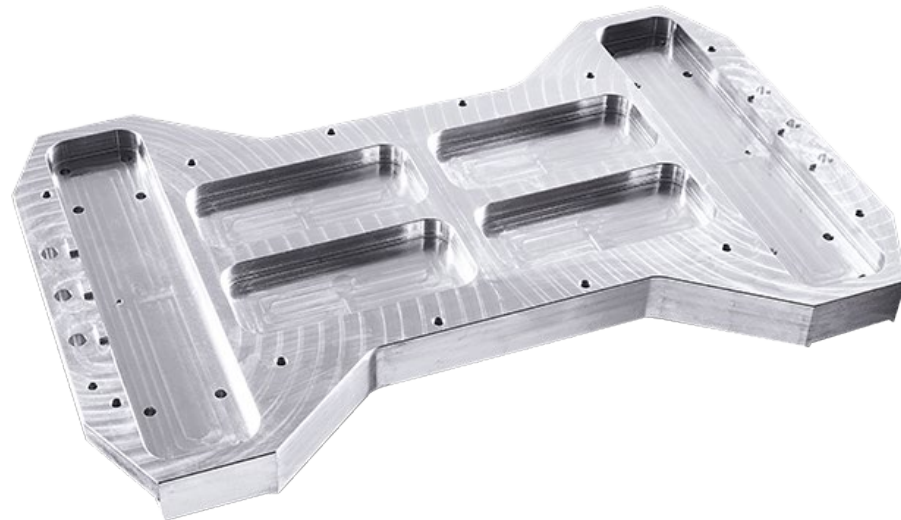
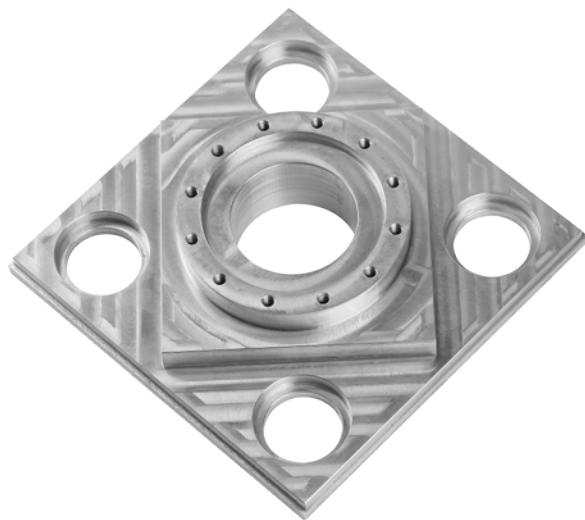
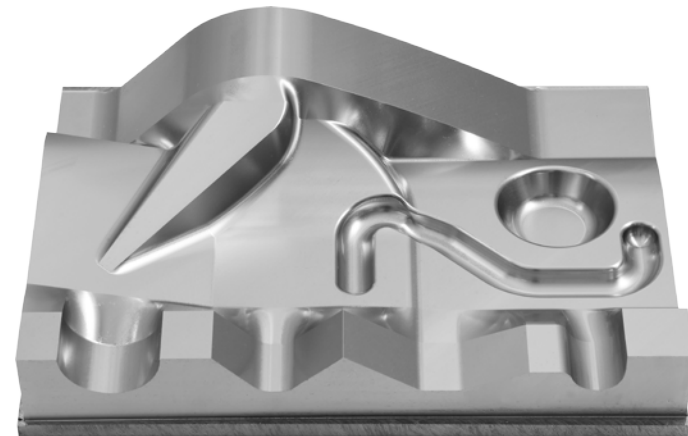
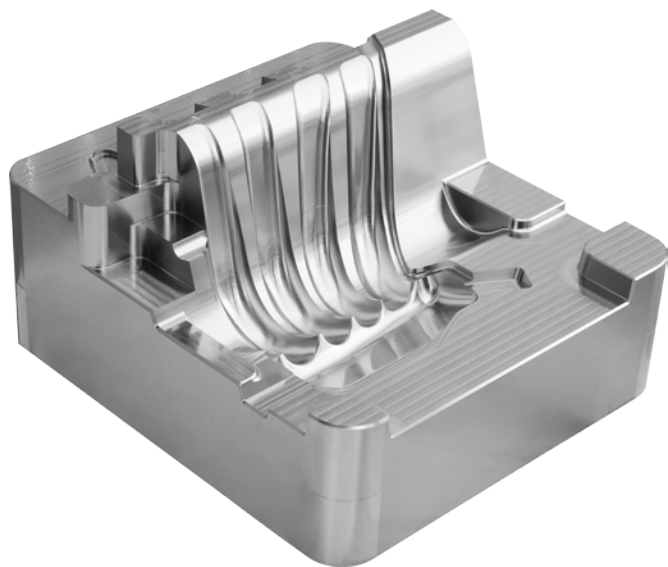
Our Team

International, competent, highly motivated and always open for new ideas... This is our team. The cooperate culture is a mirror of these attitudes. Our management has got a "open ear" from bottom to top and we are and we practise flat hierarchy.

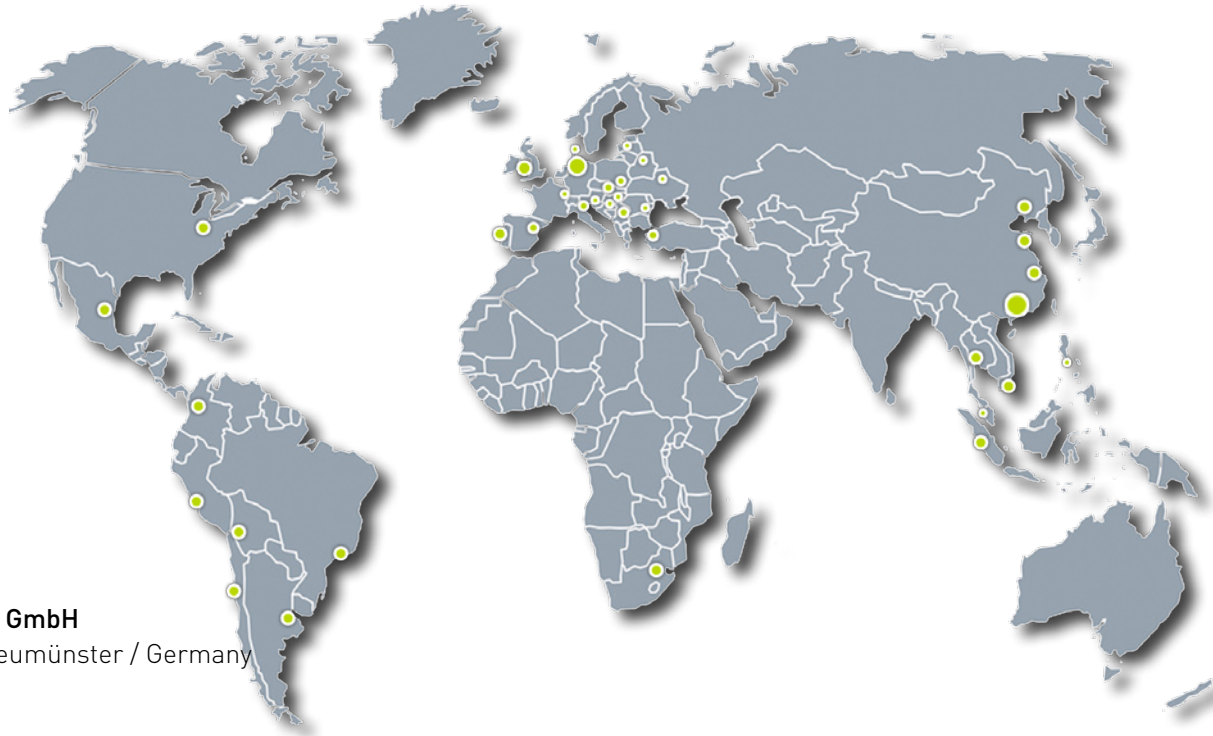
PRIMINER Global TEAM



WORKPIECE SAMPLES



PRIMINER



PRIMINER Werkzeugmaschinen GmbH

Tungendorfer Str.10 · D-24536 Neumünster / Germany
Tel: +49 (0) 4321-53 9946 -0
Fax: +49 (0) 4321-25 2003 -90
E-mail: info@priminer.de

PRIMINER SOUTH EAST EUROPE · PRIMINER d.o.o. BEOGRAD

Vladimira Popovica 38-40 · GTC - 11070 Beograd / Srbija
Tel: +381 69 702 705
Fax: +381 11 715 69 00
E-mail: office@priminer.de

PRIMINER MACHINE TOOLS DONGGUAN CO., LTD

XinRuYi Industrial Park, Fuxing Road, Xingguang Village, Huangjiang Town, Dongguan, P.R.China
Tel: +86 769 838 490 61
Fax: +86 769 838 490 62
E-mail: sales@priminer.de

www.priminer.de